

PLAN SHOWING SUBDIVISION SURVEY OF PARCEL 5115, SITUATE IN THE SAN PEDRO REGISTRATION SECTION, BLOCK NO.7, R.I.M. SHEET NO. 7/10/9580 AMBERGRIS CAYE, BELIZE DISTRICT.

SURVEYED AT THE REQUEST OF Daniel Guerrero.

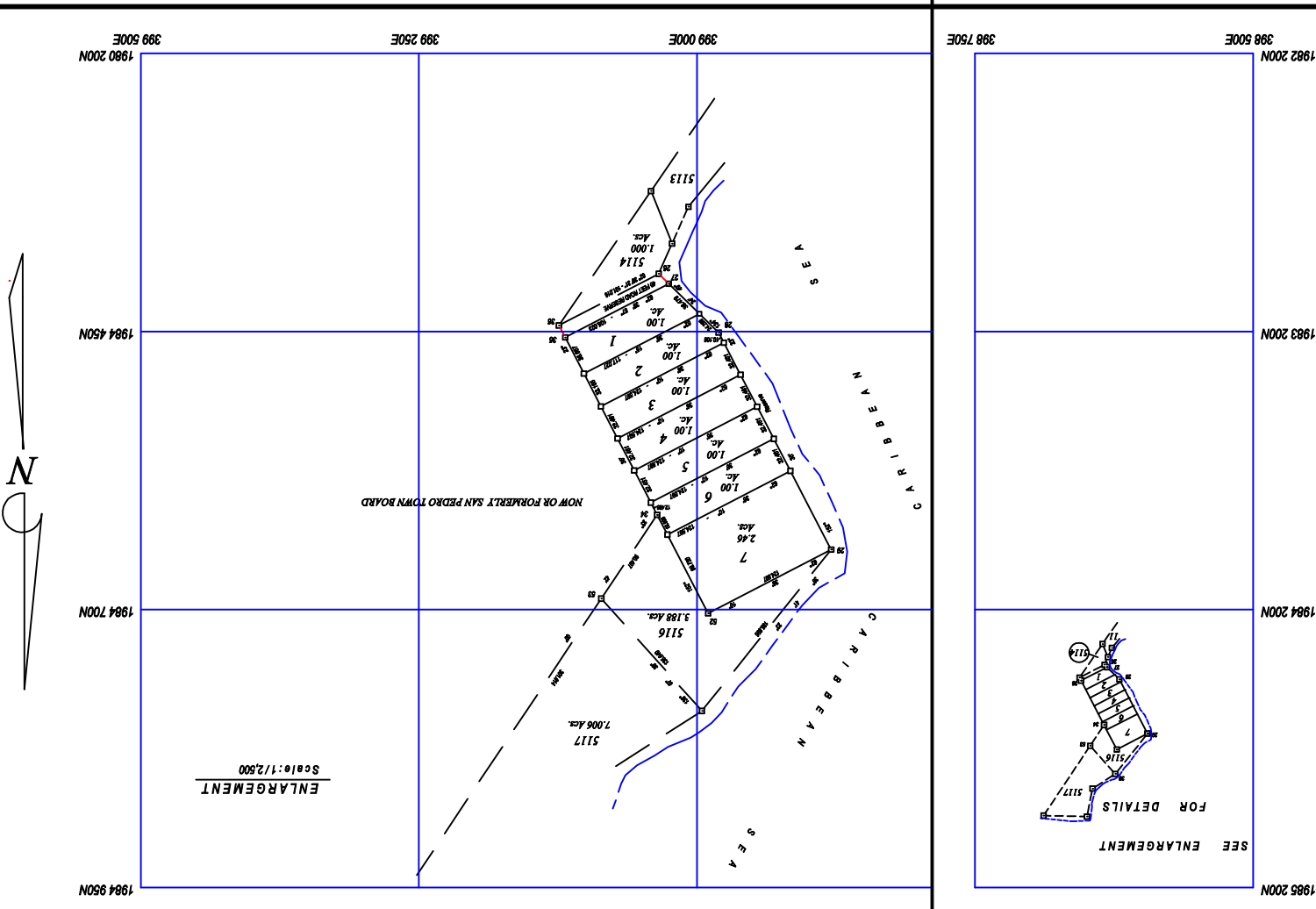
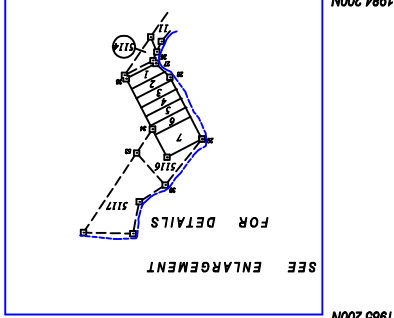
Reference - L.U.A. 20706(13)

NOTE:

- DISTANCES FOUND
- DISTANCES FOUND PINS
- DISTANCES FOUND WITH CONCRETE
- SCALES FACTOR = 999196
- DISTANCES AND BEARINGS ARE QUAD CONFORMANCE = 0° 17' 12"
- ORIGIN OF CORNER PIN: P.L. CP 28 ON ENTRY 9453, REG. 24
- ORIGIN OF CORNER PIN: P.L. CP 28 ON ENTRY 9453, REG. 24

Surveyed by _____
Date _____
WILLIAM P. NEAL (Cert. Dip. Land Surveying)
Licensed Land Surveyor

Scale: 1/10,000



REGISTRATION	AUTHENTICATION	DATE
ENTRY NO. _____ REG.NO. 25	AUTHENTICATED BY _____	
FILE REFERENCE _____	APPROVED BY _____	
DATE RECEIVED _____	PREPARED BY _____	

Commissioners of Lands and Surveys

Old T.M. Zone 15 in meters

STATIONS	HEIGHTS	NOTICES
26	1984 085.237	1984 085.238
27	1984 085.237	1984 085.238
28	1984 085.237	1984 085.238
29	1984 085.237	1984 085.238
30	1984 085.237	1984 085.238